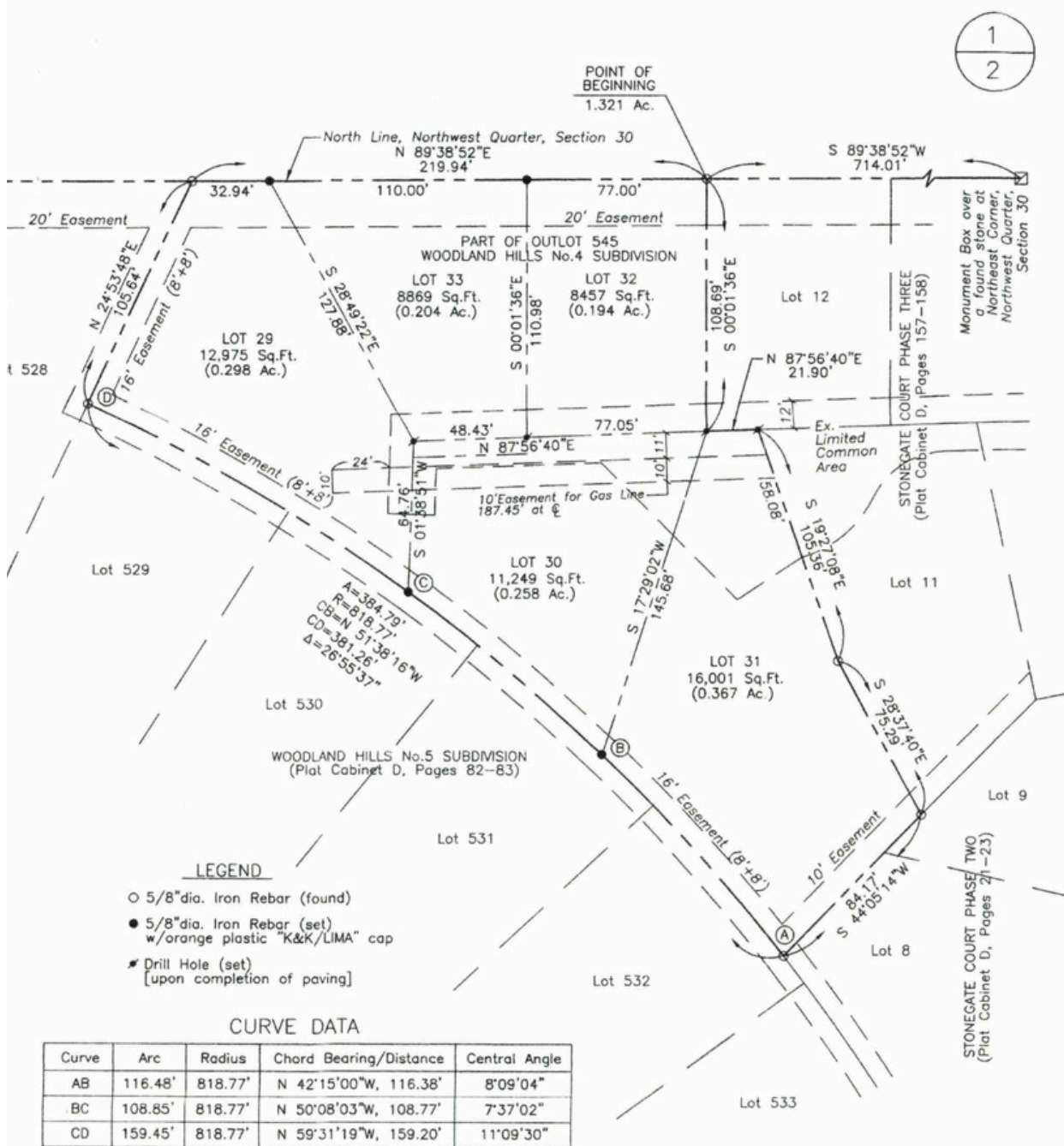


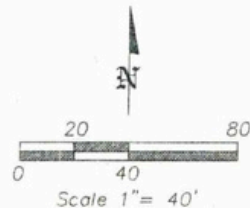
Stonegate Court Layout

Phase 7



This plot and the accompanying description are based on field and office work performed under my supervision by Kohli & Kaliher Associates, Inc., of Lima, Ohio. Bearings are based on an assumed bearing of N 89°38'52"E for the north line of the northwest quarter of said Section 30.

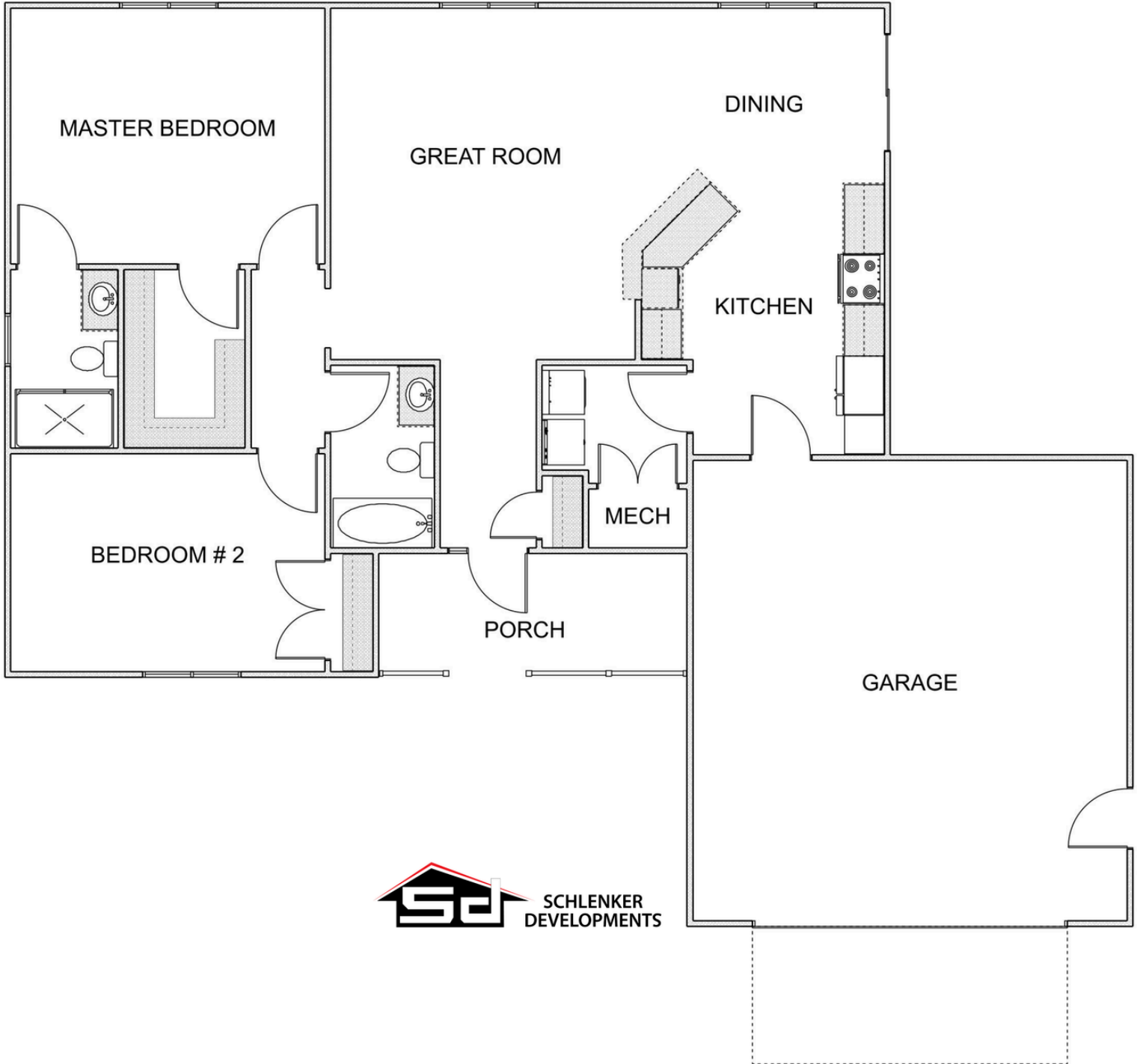
Michael G. Buettner
Michael G. Buettner, P.S. #6881
March 19, 2021
Date



Prepared for
Schlenker Developments, Incorporated
by
KOHLI & KALIHAR ASSOCIATES, INC.
2244 BATON ROUGE AVENUE
LIMA, OHIO 45805
(419) 227-1135
DATE: March 18, 2021

Condo Floor Plans

2 Bedroom Condo



Condo Floor Plans

3 Bedroom Condo

